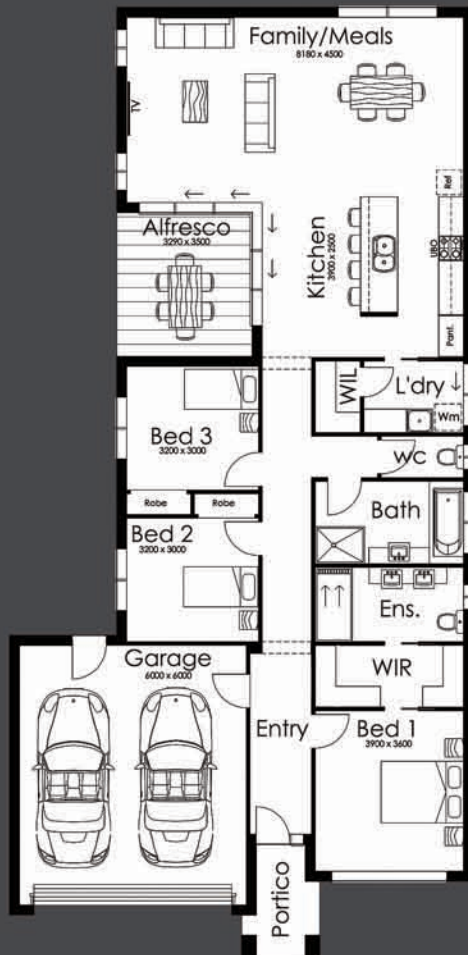




BRUCE MACTIER
BUILDING DESIGNERS
WE BUILD ON YOUR IDEAS



BELAIR 16.5



CONTEMPORARY



TRADITIONAL



COASTAL

BELAIR 16.5

Suited to suburban sites with limited width, the design of this dwelling caters particularly well to the needs of young families.

Featuring three bedrooms, walk in robe & ensuite to bed 1 & large bathroom servicing Bed 2 & Bed 3.

A spacious open plan living area transitions seamlessly out to the alfresco allowing the two living spaces to converge into one.

Living Area

152.96m²

Garage Area

41.38m²

Alfresco Area

11.52m²

Portico Area

5.04m²

3

Bedroom



2

Ensuite/Bath



2

Double Garage



Holloway
BUILDING SOLUTIONS
DBU12881 ABN: 46 692 845 617

Call Andrew on
0418 597 246