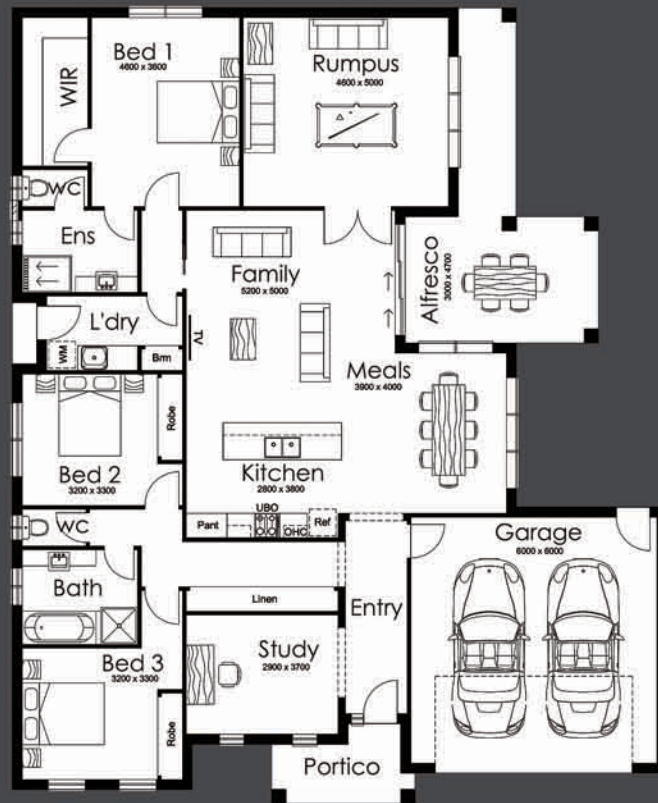




BRUCE MACTIER
BUILDING DESIGNERS
WE BUILD ON YOUR IDEAS



GRAMPION 20.8



CONTEMPORARY



COASTAL



TRADITIONAL

GRAMPION 20.8

This dwelling boasts a luxurious design which would suit those with a growing family.

Featuring three bedrooms, study & two spacious living areas which can be furnished to suit the family.

The main bedroom at the rear is far enough away from the other bedrooms to create your own private retreat.

Living Area	193.31m ²
Garage Area	40.04m ²
Alfresco Area	23.07m ²
Portico Area	6.6m ²
Porch Area	0.9m ²

3	Bedroom	
2	Ensuite/Bath	
2	Double Garage	



Holloway
BUILDING SOLUTIONS
DBU12881 ABN: 46 692 845 617

Call Andrew on
0418 597 246