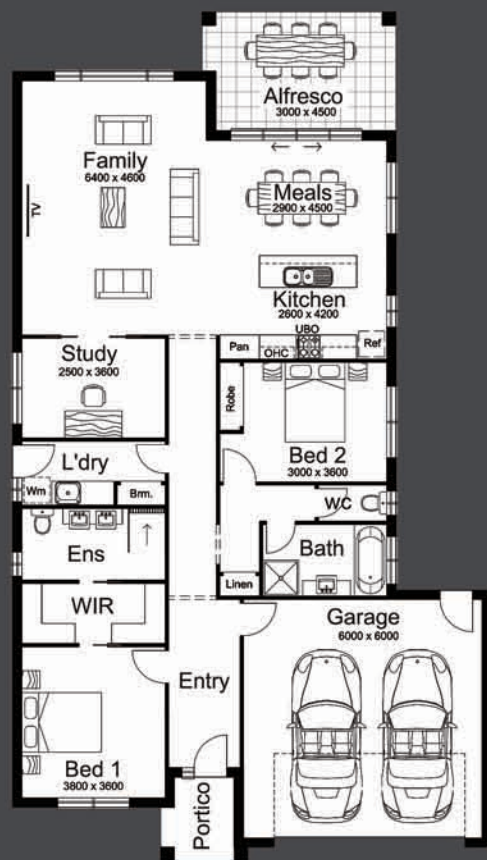




BRUCE MACTIER  
BUILDING DESIGNERS  
WE BUILD ON YOUR IDEAS



TORRENS 16.2



TRADITIONAL



CONTEMPORARY



COASTAL

# TORRENS 16.2

This design is ideal for narrow suburban sites, it is well suited to those with a busy lifestyle and is a good option for first home buyers.

Featuring two spacious bedrooms and a study, the double doors off the main living allow the choice of private study or an interactive environment.

An open plan living transitions out to the stunning alfresco overlooking the backyard.

Living Area	150.45m <sup>2</sup>	2	Bedroom	
Garage Area	39.92m <sup>2</sup>	2	Ensuite/Bath	
Alfresco Area	14.14m <sup>2</sup>	2	Double Garage	
Portico Area	6.0m <sup>2</sup>			



Holloway  
BUILDING SOLUTIONS  
DBU12881 ABN: 46 692 845 617

Call Andrew on  
0418 597 246