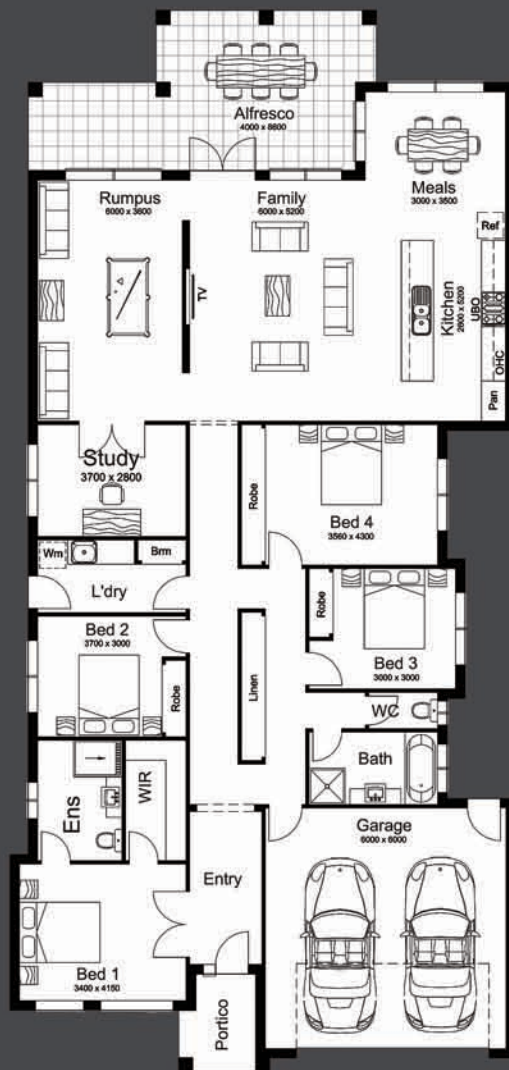




BRUCE MACTIER
BUILDING DESIGNERS
WE BUILD ON YOUR IDEAS



TORRENS 22.4



CONTEMPORARY



COASTAL



TRADITIONAL

TORRENS 22.4

This design is ideal for suburban sites and would suit those with the needs of a growing family.

Featuring a four bedroom design with study & two generous living areas.

A larger open plan living transitions out through glazed french doors to a stunning alfresco/entertaining area overlooking the backyard.

Living Area	208.55m ²	4	Bedroom	
Garage Area	39.84m ²	2	Ensuite/Bath	
Alfresco Area	27.87m ²	2	Double Garage	
Portico Area	6.71m ²			

Holloway
BUILDING SOLUTIONS
DBU12881 ABN: 46 692 845 617
Call Andrew on
0418 597 246